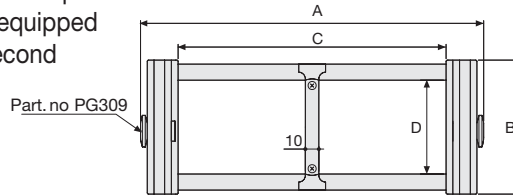


# Serie Heavy

# SR309B Nylon Cable Chain with Aluminium Rods

## Inner height (D) 70 mm

Construction with sidebands male/female joining system with triple nylon pin. Standard chain is equipped with aluminium rods every second pitch; on request rods can be assembled every pitch.



## Separator

- Unassembled	Part. no S309C
- Assembled	Part. no S309MC

## Technical characteristics when self-supported

Speed	8 m/s
Acceleration	40 m/s <sup>2</sup>

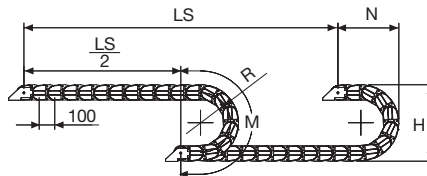
For higher requirements please consult our technical dept.

3

A	B	C	D	R	Weight/m	Chain
mm	mm	mm	mm	mm	kg	Part Number
156	100	100	70	200-250-300-350-400-500	4,20	SR309B100 □ *
206	100	150	70	200-250-300-350-400-500	4,40	SR309B150 □ *
256	100	200	70	200-250-300-350-400-500	4,55	SR309B200 □ *
306	100	250	70	200-250-300-350-400-500	4,70	SR309B250 □ *
356	100	300	70	200-250-300-350-400-500	4,85	SR309B300 □ *
456	100	400	70	200-250-300-350-400-500	5,20	SR309B400 □ *
C+56	100	.....	70	200-250-300-350-400-500		SR309B □ □ □ □ **

\*Complete the code by inserting the value of the radius (R): Ex. SR309B150 □  
Where: 2=200; 3=250; 4=300; 5=350; 6=400; 7=500

\*\*Complete the code by inserting the value of the quote C and the radius (R): Ex. SR309B □ □ □ □  
Chain equipped with aluminium rods every pitch: complete the code by inserting the letter D.  
Ex. SR309B1502 □



R	H	N	M
mm	mm	mm	mm
200	500	350	830
250	600	400	985
300	700	455	1145
350	800	500	1300
400	900	555	1460
500	1100	650	1770

Length of chain (L)

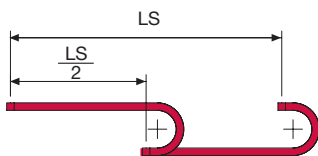
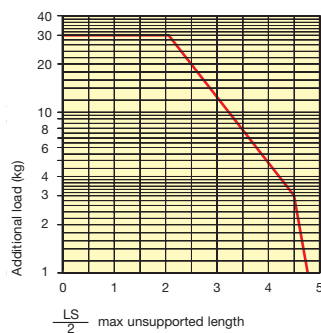
Half travel distance ( $\frac{LS}{2}$ )  
plus length of curve (M)

$$L = \frac{LS}{2} + M$$



### Self-Supporting Capacity Diagram

The maximum length of the self-supporting capacity ( $\frac{LS}{2}$ ) in relationship to the weight of the cables and hoses contained per linear metre.



For applications with  $\frac{LS}{2}$  and weights not included in the area of the diagram showing self-supporting capacity, verify the possible use of support rollers (see page 30).

### End Brackets

The end brackets set allows the two ends of the chain to be attached to the equipment.

#### Nylon Type

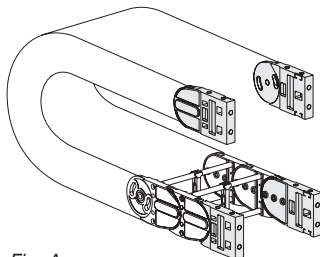


Fig. A  
End brackets can be mounted in any position. (Fig. A)

#### Bright Zinc Plated Steel Type\*

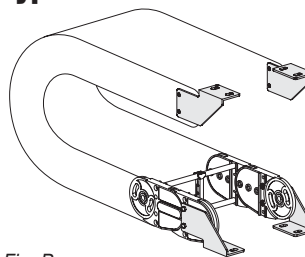
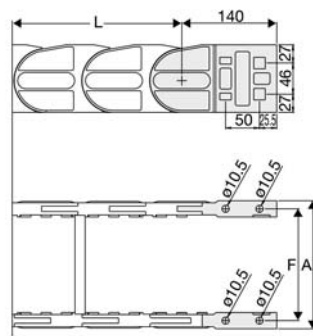
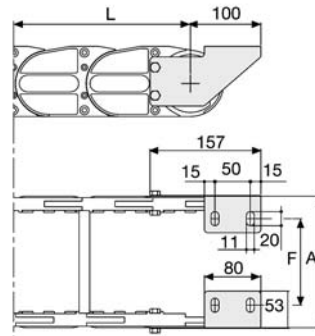


Fig. B  
Chain fixed outside the radius. (Fig. B)  
See end brackets mounting variations: page 31.



Chain	F
	mm
SR309B100	129
SR309B150	179
SR309B200	229
SR309B250	279
SR309B300	329
SR309B400	429
Special dimension F=A-27	



Chain	F
	mm
SR309B100	87
SR309B150	137
SR309B200	187
SR309B250	237
SR309B300	287
SR309B400	387
Special dimension F=A-69	

### Nylon Type Part Numbers

#### Complete Set Assembled

Chain Type	End Brackets Set
SR309B...	AN309KM

#### Complete Set Unassembled

SR309B...	AN309K
-----------	--------

### Bright Zinc Plated Steel Type Part Numbers

#### Complete Set Assembled

Chain Type	End Brackets Set
SR309B...	A309KM □**

#### Complete Set Unassembled

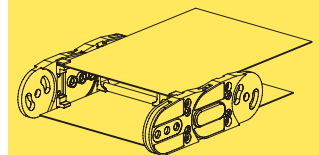
SR309B...	A309K □**
-----------	-----------

\*Available on request in stainless steel  
\*\* 1=pos. 1; 2=pos.2; 3=pos.3  
See end brackets mounting variations page 31.

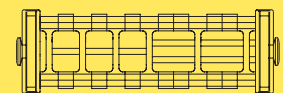
## Serie Heavy

# SR309B

Nylon Cable Chain with Aluminium Rods



Steel laminar cover.



Supplementary movable separators.

For further information please consult Brevetti Stendalto's Technical Office